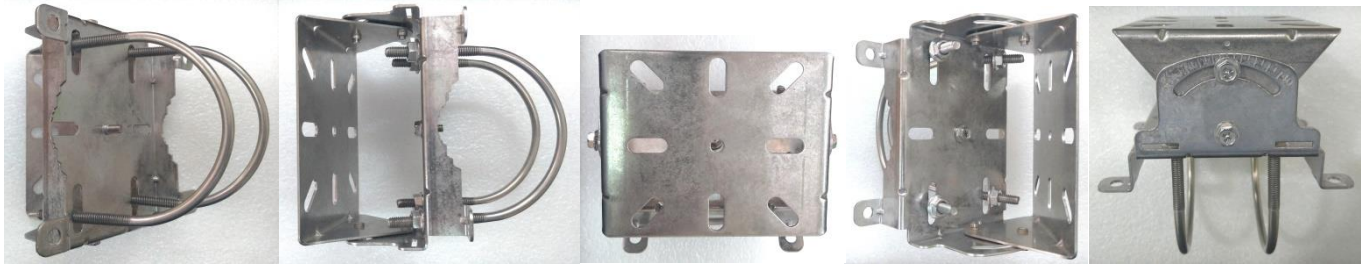


IOP-UHMK-VESA75-1

VESA-75 International Standard

--Universal Stainless Steel 17-level Wind Pressure Mounting Kit

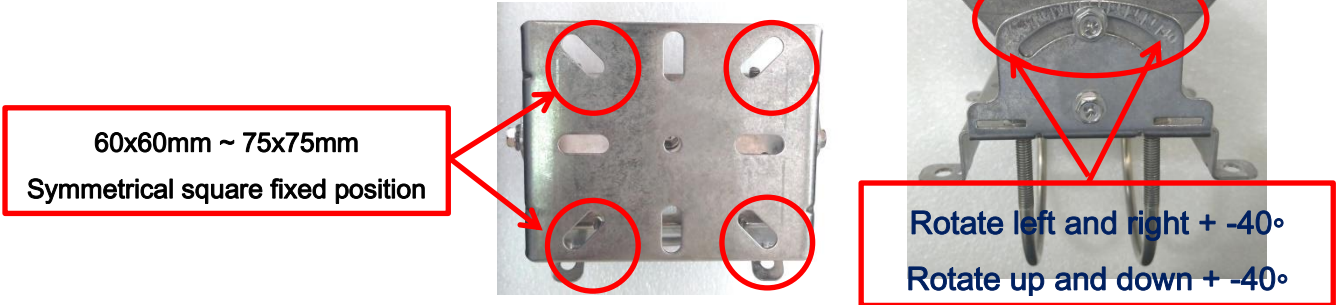


No	Main Description	Main SPEC	Function Description
1	VESA International Standard Mounting Kit	75mm x 75mm Square Fixed Point	<ul style="list-style-type: none"> ■ Suitable for VESA-75 Indoor / Outdoor Equipment Fixing
2	General Outdoor Wireless Equipment Mounting Kit	60 x 60mm ~ 75 x 75mm Square Fixed Point	<ul style="list-style-type: none"> ■ Suitable for General Indoor / Outdoor Equipment Fixing
3	Components — Fixed to the Device	Stainless Steel SUS2B-1.5T 114 x 93 x 49.89mm Thickness: 1.2mm	<ul style="list-style-type: none"> ■ M5 x 8 screws x 5Pcs ■ Support Triangle Fixed Point Fixing Method
4	Components — Fixed to the Pole End	Stainless Steel SUS2B-1.5T 118.3 x 125 x 67.37mm Thickness: 1.2mm	<ul style="list-style-type: none"> ■ With M5 x 8 screws x 4Pcs ■ With M5 x 12 screws x 1Pcs ■ Supports Screw-tightening Method ■ Support + -40° Antenna Angle Adjustment Function ■ Support Street Lamp Pole Fixing Method (Strap) ■ Support Power Pole Fixing Method (Strap)
5	Components — U-Bar Screws	Stainless Steel SUS2B-1.5T 97 x 94 x M6 mm Thread Length: 50mm	<ul style="list-style-type: none"> ■ M6 with Washer x 4Pcs ■ Support 1 ~ 2.5 inch Pole Fixing Method
6	Components — Fastening Straps *	Strap Fixed up to 10 inch Rod Belt Width: 15mm max Belt Thickness: 2mm max	<ul style="list-style-type: none"> ■ Support Plastic Strap ■ Support Metal Strap ■ Support Special Belt
7	Assembly Size	L x W x H :125 x 125 x 77mm	<ul style="list-style-type: none"> ■ Assembled Length of Rod Fixing U-screw is 145mm
8	Bearing Wind Pressure	Can Withstand Wind Pressures Level 17 as 250Km/hr Above	<ul style="list-style-type: none"> ■ 17-Stage 500Kg/m2 Wind Pressure Capable of Bearing Equipment Area 75cm x 75cm
9	Proprietary Function — Rotate to Adjust the Angle	Fixed Position with Symmetrical Squares Adjust with + -40° Mark Rotate Left and Right + -40° Rotate Up and Down + -40°	<ul style="list-style-type: none"> ■ Rotate the Fixed Direction of the Rotating Frame to Change the Direction of Adjustment
10	Proprietary Function — Support Triangle Fixed Point Fixing Method	Use M5 x 8 Cross Screws with Washers 5 Screw Holes Fixed on the Device Side	<ul style="list-style-type: none"> ■ It has the Effect of Strengthening the Triangle With Anti-vibration Effect
11	Proprietary Function — Supports the Tightening Method of the Screw Fixing Point	Use M5 x 8 Cross Screws with Washers 3mm Screw Hole at the Middle of the Pole	<ul style="list-style-type: none"> ■ With Reinforcing Rod Type Fixing Effect ■ With Anti-vibration Effect ■ Supports 0.5 ~ 1 inch Pole Fixing Method
12	Proprietary Function — Support Wall Screw Hole Non-slip Fixing Method	88.3mm x 105mm Screw Hole Location	<ul style="list-style-type: none"> ■ Through Wall Screw Holes and U-shaped Screws

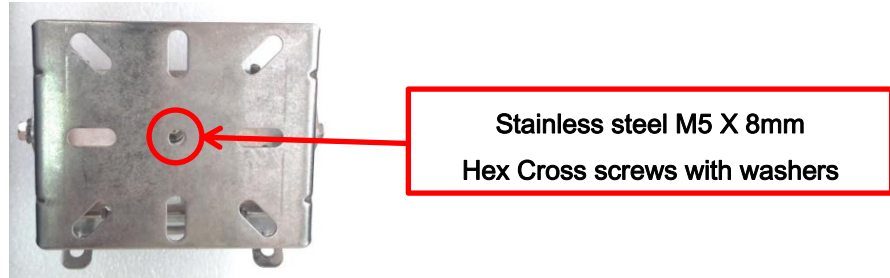
*: Optional

<< Dedicated Feature Illustration >>

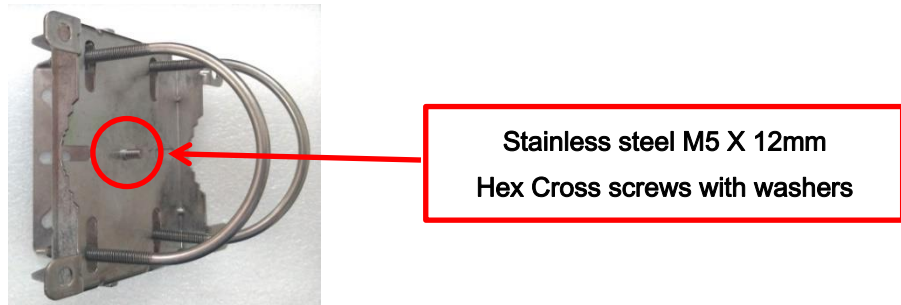
■ Support rotation adjustment angle



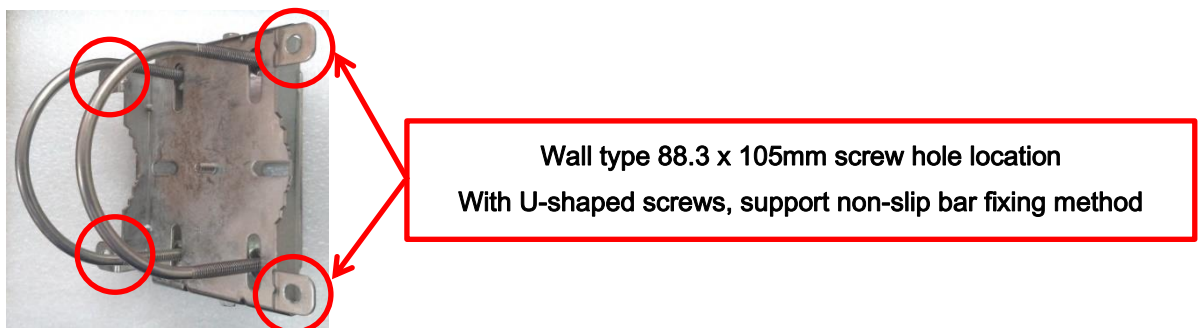
■ Support triangle fixed point fixing method



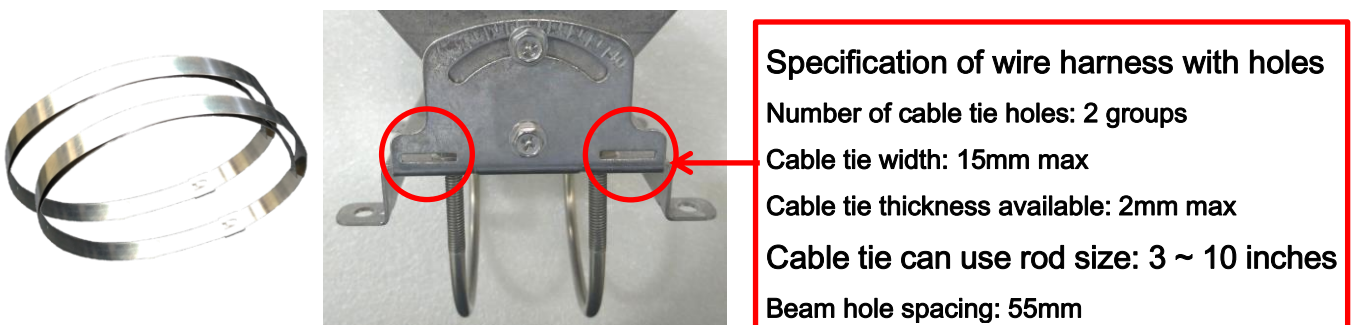
■ Support the tightening method of the screw fixing point



■ Support non-slip fixing method of wall screw holes

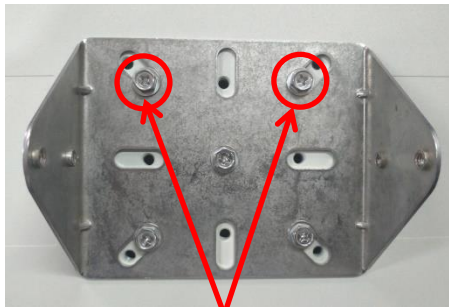
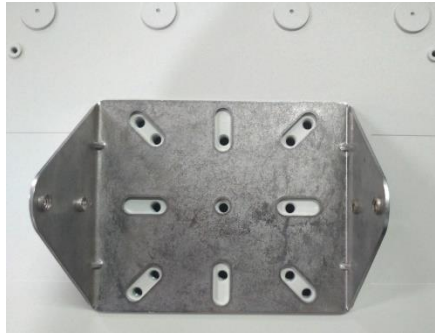


■ Support Electric pole/Lamppost/3 inch pole~ cable tie fixation method

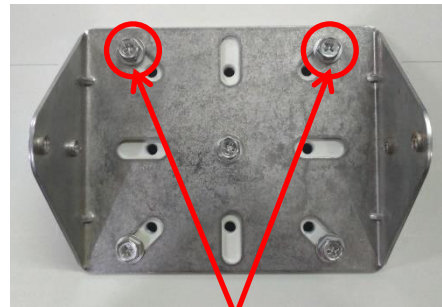


<< Assembly illustration >>

■ Fixed on the Device Side



60 x 60mm Fixed Method



VESA-75 x 75mm Fixed Method

■ Assemble the Fixing Frame and Fix it on the Equipment Side



First Group the U-shaped Screws



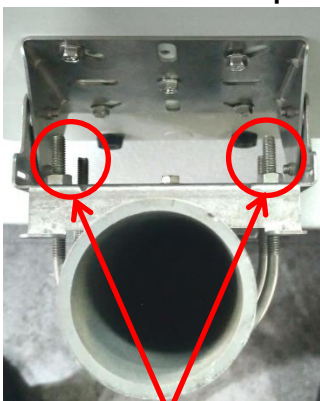
Assembly and Fixing of Two Components



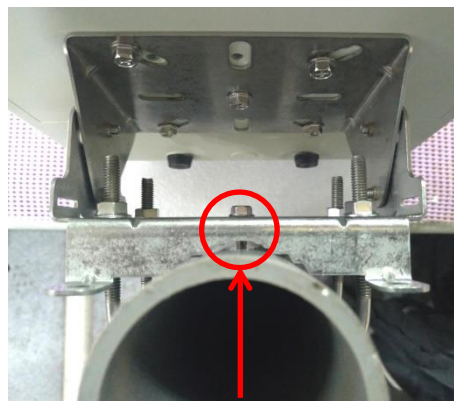
Complete the Fixing Frame Assembly on the Equipment Side



■ Fixed on the pole end



Fixed to the Pole
When the U-screw is Fixed, Please Lock the Average Length is Fixed



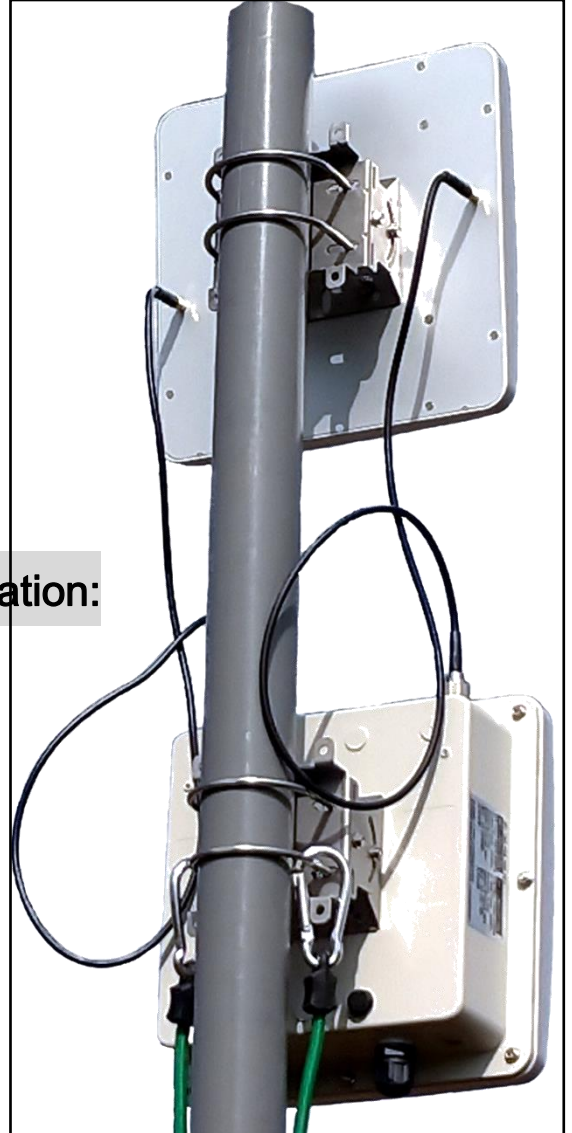
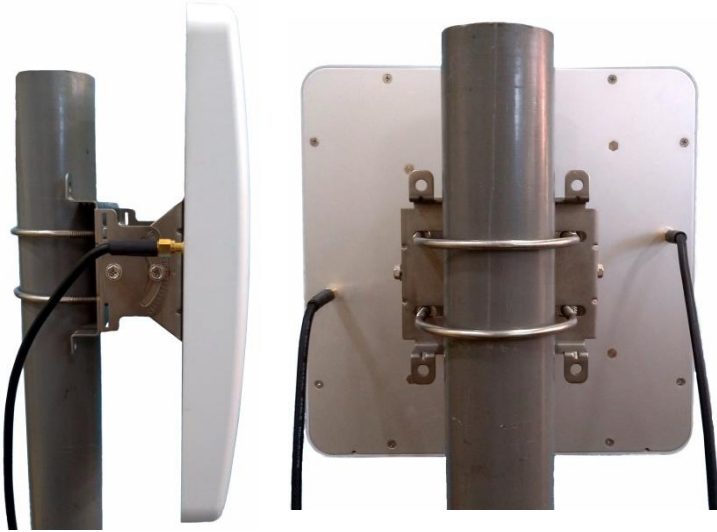
Adjustment, Tightening, Fixing Screws



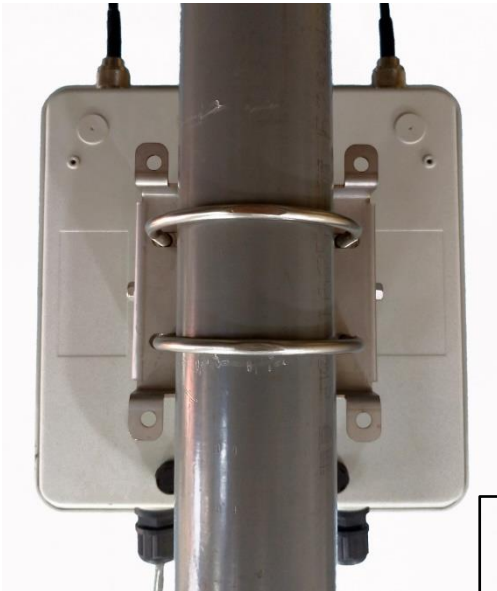
Fasten Tightly to the Pole
When the U-screw is Fixed, Please Lock Parallel Width Fixed

<< Installation of various equipment application diagrams >>

■ Outdoor antenna fixing frame application:



■ Outdoor wireless ODU fixed rack application:



Outdoor antenna and wireless equipment
Common universal stainless steel fixing frame

■ All-in-one antenna fixed frame application:

