

# IP69 Waterproof and Corrosion-resistant and Wind-resistant and Anti-interference

## Aluminum Alloy Die-casting Case

### IOP-WMDC-1P1L6N4N-T ( Toppan Cover )



#### Model : IOP-MBAP-XACX\_A1

			<p><b>Toppan Cover design support :</b></p> <ul style="list-style-type: none"> <li>-- PCBA Mainboard Fixing Screw Column * 6</li> <li>-- Ethernet Lightning Surge Protection Board Fixing Screws * 3</li> <li>-- Ethernet or DC Lightning Surge Protection Board Fixing Screws * 3</li> <li>-- Interference Partition or PCBA Fixing Plate Fixing Screw Column * 4</li> </ul>
<p>16 screw posts can be provided for common</p>			

assembly of PCBA of multiple products

## Model : IOP-MBAP-XACX\_A2



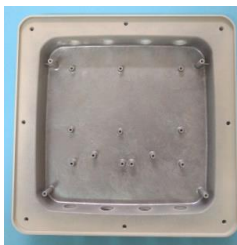
With 4 M16 aperture specifications

16 screw posts can be provided for common assembly of PCBA of multiple products

### Toppan Cover design support :

- PCBA Mainboard Fixing Screw Column \* 6
- Ethernet Lightning Surge Protection Board Fixing Screws \* 3
- Ethernet or DC Lightning Surge Protection Board Fixing Screws \* 3
- Interference Partition or PCBA Fixing Plate Fixing Screw Column \* 4

## Model : IOP-MBAP-XACX\_A3



With 8 M16 aperture specifications

16 screw posts can be provided for common assembly of PCBA of multiple products

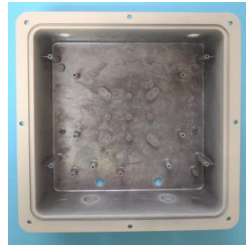
### Toppan Cover design support :

- PCBA Mainboard Fixing Screw Column \* 6
- Ethernet Lightning Surge Protection Board Fixing Screws \* 3
- Ethernet or DC Lightning Surge Protection Board Fixing Screws \* 3
- Interference Partition or PCBA Fixing Plate Fixing Screw Column \* 4

## Model : IOP-MBAP-XACX\_C1



With 2 M12 aperture specifications  
 With 2 M16 aperture specifications  
 With 2 M20 aperture specifications



15 screw posts can be provided  
 for common assembly of PCBA  
 of multiple products



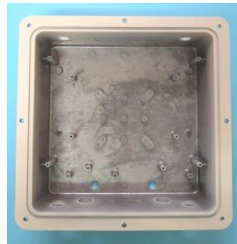
### Under Cover design support :

- PCBA Mainboard Fixing Screw Column \* 4
- Ethernet Lightning Surge Protection Board Fixing Screws \* 3
- Ethernet or DC Lightning Surge Protection Board Fixing Screws \* 2
- Interference Partition or PCBA Fixing Plate Fixing Screw Column \* 4
- Spare heat conducting screw column \* 2

## Model : IOP-MBAP-XACX\_C2



With 2 M12 aperture specifications  
 With 4 M16 aperture specifications  
 With 2 M20 aperture specifications



15 screw posts can be provided  
 for common assembly of PCBA  
 of multiple products




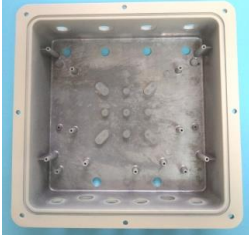
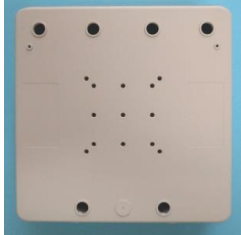
### Under Cover design support :

- PCBA Mainboard Fixing Screw Column \* 4
- Ethernet Lightning Surge Protection Board Fixing Screws \* 3
- Ethernet or DC Lightning Surge Protection Board Fixing Screws \* 2
- Interference Partition or PCBA Fixing Plate Fixing Screw Column \* 4
- Spare heat conducting screw column \* 2

## Model : IOP-MBAP-XACX\_C3

			<p><b>Under Cover design support :</b></p> <ul style="list-style-type: none"> <li>-- PCBA Mainboard Fixing Screw Column * 4</li> <li>-- Ethernet Lightning Surge Protection Board Fixing Screws * 3</li> <li>-- Ethernet or DC Lightning Surge Protection Board Fixing Screws * 2</li> <li>-- Interference Partition or PCBA Fixing Plate Fixing Screw Column * 4</li> <li>-- Spare heat conducting screw column * 2</li> </ul>
<p>With 2 M12 aperture specifications          With 6 M16 aperture specifications          With 2 M20 aperture specifications</p>	<p>15 screw posts can be provided for common assembly of PCBA of multiple products</p>		

## Model : IOP-MBAP-XACX\_C4

			<p><b>Under Cover design support :</b></p> <ul style="list-style-type: none"> <li>-- PCBA Mainboard Fixing Screw Column * 4</li> <li>-- Ethernet Lightning Surge Protection Board Fixing Screws * 3</li> <li>-- Ethernet or DC Lightning Surge Protection Board Fixing Screws * 2</li> <li>-- Interference Partition or PCBA Fixing Plate Fixing Screw Column * 4</li> <li>-- Spare heat conducting screw column * 2</li> </ul>
<p>With 6 M12 aperture specifications          With 8 M16 aperture specifications          With 2 M20 aperture specifications</p>	<p>15 screw posts can be provided for common assembly of PCBA of multiple products</p>	<p>M12 Type have 6 Holes</p>	

**Welcome to inquire about OEM/ODM customized business cooperation!!**